

MELANIE CHOW

PERSONAL REAL ESTATE CORPORATION



3233 GRAVELEY STREET, EAST VANCOUVER

3195 Oak Street, Vancouver, BC, V6H 2L2

C: 604 839 3231

info@melaniechow.ca

MC

www.melaniechow.ca





{All Photos Virtually Staged}

<p>3233 GRAVELEY STREET, EAST VANCOUVER</p>	
<p>\$1,988,000</p>	
<p>🛏️: 5 🚿: 3.5 🚗: 2</p>	
<p>2,588 SQ/FT</p>	<p>Walk Score: 78</p>

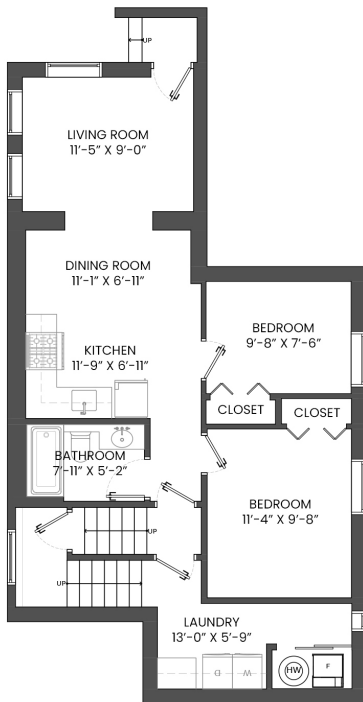
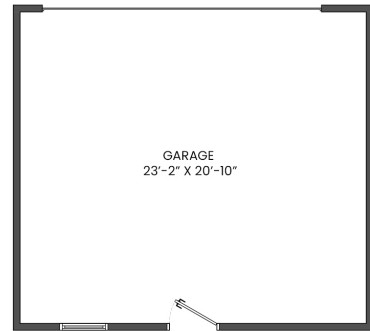
Welcome to this well kept family home in the popular and trendy Renfrew neighbourhood. This north south facing home features three good sized bedrooms on the upper level including master bedroom with ensuite. Spacious main level for more living and entertaining space plus a proper two bedroom basement suite that can easily convert to be a self contained unit for additional revenue or housing needs.

New elementary school, Laura Secord for French Immersion and Vancouver Technical Secondary school nearby. Close to trendy restaurants, shopping centres, banks, services and transit walking distance. Easy access by car or transit to Downtown or the highway to all other municipalities and beyond. This one won't last long.

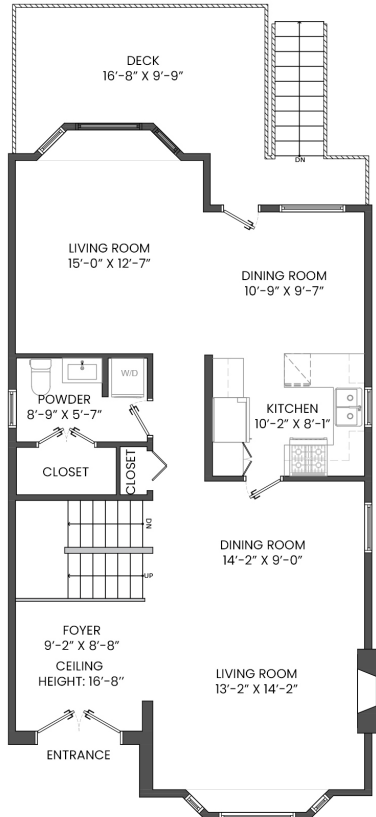
MELANIE CHOW
PERSONAL REAL ESTATE CORPORATION

3233 GRAVELEY STREET, VANCOUVER, BC

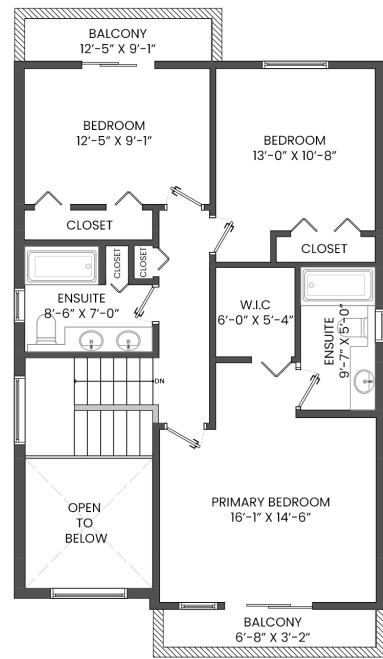
LOWER FLOOR TOTAL: 808 SQ.FT. GARAGE: 524 SQ. FT.
 MAIN FLOOR TOTAL: 959 SQ.FT. DECK: 180 SQ. FT.
 UPPER FLOOR TOTAL: 821 SQ.FT. BALCONY: 71 SQ. FT.
TOTAL: 2,588 SQ.FT.



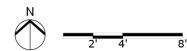
LOWER FLOOR PLAN
 Ceiling Height: 8'-0"



MAIN FLOOR PLAN
 Ceiling Height: 8'-0"



UPPER FLOOR PLAN
 Ceiling Height: 8'-0"



Melanie Chow PREC*
 604.839.3231
 info@melaniechow.ca

OAKWYN REALTY
* PERSONAL REAL ESTATE CORPORATION. THE FLOOR PLAN ILLUSTRATION IS NOT SUITABLE FOR CONSTRUCTION/ ARCHITECTURAL PURPOSES. MEASUREMENTS ARE APPROXIMATE AND MAY NOT BE TO SCALE. E&O INSURED. FLOOR PLAN DESIGNED BY ISHOT.CA ENTERPRISES INC. 604-368-7979 ISHOT.CA

